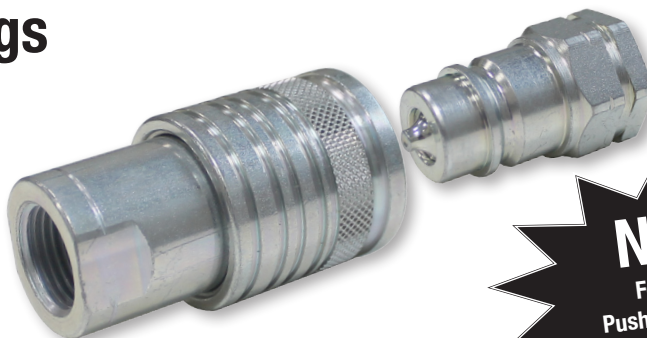


Quick Release Couplings HP - PUSH-PULL TYPE ISO-A



Product Description

The double-acting sliding sleeve is fixed in the locked position by means of a pre-stressed spring. For the purpose of uncoupling it is able to slide in both axial directions. The two halves of the plug-type coupling are locked together securely by means of precision snap-in balls.

The sliding sleeve on the female coupling can be installed in a bulkhead or fixed clamping device e.g. STAUFF Clamp, to act as a breakaway coupling. If the system is decoupled then the valves close automatically, preventing damage to the hose and possible loss of oil.

Features

- According to ISO 7241-1(A)
- Can be installed as breakaway coupling
- Modular design
- High performance flow characteristics
- Galvanised zinc plated

Material

- Steel
- Stainless steel (available on request)

Applications

- Agricultural machinery
- Hydraulic attachments & implements
- Hydraulic systems - vehicle & construction equipment

Advantages

- Hardened flat retaining ring to secure internal valve
- Reliable ball locking mechanism

Accessories

Dust Protection

A range of caps & plugs available for protection against dust. Other plug & cap options available on request.

Sleeve Mounting

STAUFF standard & heavy duty clamps can be used to decouple utilising the push-pull feature on the female HP series coupling.

Contact your local STAUFF office for more information.

Order Codes / Technical Information

Item No.	Description	Working Pressure	Bursting Pressure	
			Connected	Female
2012031542	HP04-1-IGF04 - COUPLING FEMALE PUSH-PULL G1/4" BSPP PORT	25 MPa (250 bar)	1000 bar	1000 bar
6100033231	HP08-1-IGF04 - COUPLING FEMALE PUSH-PULL G1/4" BSPP PORT	25 MPa (250 bar)	1000 bar	1000 bar
2012031540	HP08-1-IGF06 - COUPLING FEMALE PUSH-PULL G3/8" BSPP PORT	25 MPa (250 bar)	1000 bar	1000 bar
6100033263	HP10-1-IGF06 - COUPLING FEMALE PUSH-PULL G3/8" BSPP PORT	25 MPa (250 bar)	1000 bar	1000 bar
2012031538	HP10-1-IGF08 - COUPLING FEMALE PUSH-PULL G1/2" BSPP PORT	25 MPa (250 bar)	1000 bar	1000 bar
2012031626	HP12-1-IGF12 - COUPLING FEMALE PUSH-PULL G3/4" BSPP PORT	25 MPa (250 bar)	1000 bar	1000 bar
6100031920	HP20-1-IGF12 - COUPLING FEMALE PUSH-PULL G3/4" BSPP PORT	25 MPa (250 bar)	1000 bar	1000 bar
2012031713	HP20-1-IGF16 - COUPLING FEMALE PUSH-PULL G1" BSPP PORT	25 MPa (250 bar)	1000 bar	1000 bar

Item No.	Description	Working Pressure	Bursting Pressure	
			Connected	Male
2012031543	HP04-2-IGF04 - COUPLING MALE PUSH-PULL G1/4" BSPP PORT	25 MPa (250 bar)	1000 bar	1000 bar
6100033234	HP08-2-IGF04 - COUPLING MALE PUSH-PULL G1/4" BSPP PORT	25 MPa (250 bar)	1000 bar	1000 bar
2012031541	HP08-2-IGF06 - COUPLING MALE PUSH-PULL G3/8" BSPP PORT	25 MPa (250 bar)	1000 bar	1000 bar
6100033304	HP10-2-IGF06 - COUPLING MALE PUSH-PULL G3/8" BSPP PORT	25 MPa (250 bar)	1000 bar	1000 bar
2012031539	HP10-2-IGF08 - COUPLING MALE PUSH-PULL G1/2" BSPP PORT	25 MPa (250 bar)	1000 bar	1000 bar
2012031625	HP12-2-IGF12 - COUPLING MALE PUSH-PULL G3/4" BSPP PORT	25 MPa (250 bar)	1000 bar	700 bar
6100031903	HP20-2-IGF12 - COUPLING MALE PUSH-PULL G3/4" BSPP PORT	25 MPa (250 bar)	1000 bar	700 bar
2012031700	HP20-2-IGF16 - COUPLING MALE PUSH-PULL G1" BSPP PORT	25 MPa (250 bar)	1000 bar	700 bar

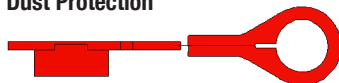
Interchange / Brands

Technochemie / Argus / Indunorm / Faster / DNP / Hansa-Flex / Helmig / TEMA / Parker / EATON / INTEVA

Coating: Chrom III (Zn-Fe) | Sealings: NBR

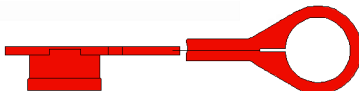
Accessories

Dust Protection



Dust cap for female body

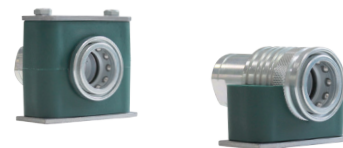
Item No.	Description
6100035121	HP08-9-RT001 - QRC-DUST PLUG-FEMALE BODY-SERIES 08
2012032149	HP10-9-RT004 - QRC-DUST PLUG-FEMALE BODY-SERIES 10
6100035125	HP12-9-RT001 - QRC-DUST PLUG-FEMALE BODY-SERIES 12
6100035129	HP20-9-RT001 - QRC-DUST PLUG-FEMALE BODY-SERIES 20



Dust cap for male tip

Item No.	Description
6100035109	HP08-0-RT001 - QRC-DUST CAP-MALE TIP-SERIES 08
2012032148	HP10-0-RT004 - QRC-DUST CAP-MALE TIP-SERIES 10
6100035124	HP12-0-RT001 - QRC-DUST CAP-MALE TIP-SERIES 12
6100035126	HP20-0-RT001 - QRC-DUST CAP-MALE TIP-SERIES 20

Sleeve Mounting



Description	Clamp O.D. Size
HP04-1-IGF04 - G1/4" BSPP PORT	25.4 mm
HP08-1-IGF04 - G1/4" BSPP PORT	32 mm
HP08-1-IGF06 - G3/8" BSPP PORT	32 mm
HP10-1-IGF06 - G3/8" BSPP PORT	38 mm
HP10-1-IGF08 - G1/2" BSPP PORT	38 mm
HP12-1-IGF12 - G3/4" BSPP PORT	48.3 mm
HP20-1-IGF12 - G3/4" BSPP PORT	55 mm
HP20-1-IGF16 - G1" BSPP PORT	55 mm

Contact STAUFF for Clamp part numbers.